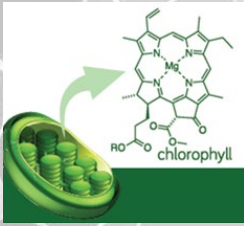


InGrained

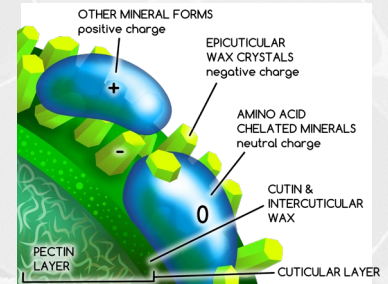
InGrained is uniquely designed to provide bioavailable nutrients directly to your crops. This foliar applied product is stable and electronegatively neutral so as to be nonreactive. This allows for compatible mixing with many other common crop spray products. Simultaneous application of InGrained with other products, results in fewer passes, less time, and less field compaction.



The Chloroplast is the "powerhouse" of the plant cell. Chlorophyll is directly involved in photosynthesis and is also one of the most important natural chelates on the planet. Note, at the center of this vital chelate there is a Magnesium ion. Supplying the plant with the correct minerals in the most bioavailable way is worth more than we have ever understood before.

Guaranteed Analysis	
Total Nitrogen (N)	3.00%
Calcium (Ca)	0.05%
Magnesium (Mg)	1.50%
Boron (B)	0.20%
Copper (Cu)	1.00%
Iron (Fe)	0.50%
Manganese (Mn)	0.50%
Zinc (Zn)	0.50%

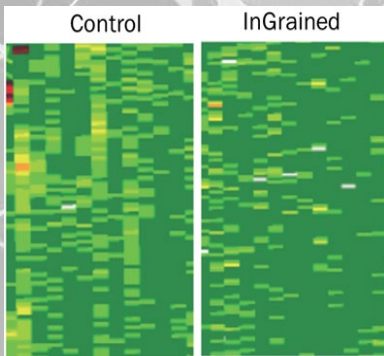
Apply 16 Oz Per Acre (1L/Hectare) To Crop
Dilute With 20 Parts Water
Jar Test for Compatibility



The waxy cuticle of the plant carries a negative charge so when a positive ion (like an inorganic mineral) comes in contact, the two attract. This holds the positive ions on the surface of the leaf. Amino Acid Minerals are neutral in charge and therefore are neither repelled or attracted to the cuticle, they simply pass through.

Soybean Field Test

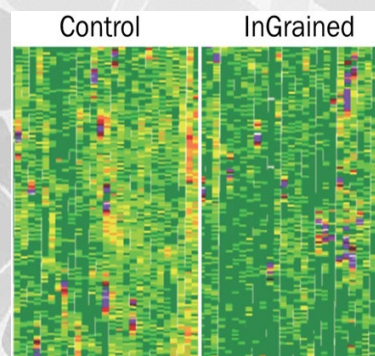
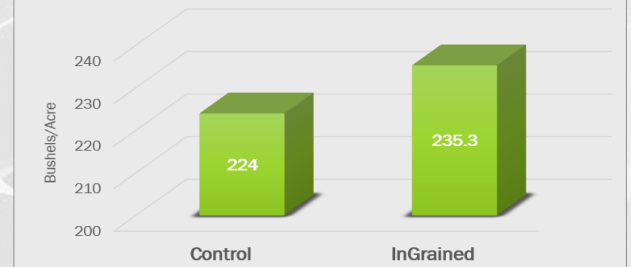
(Yields adjusted to 12% moisture)



Soybean Field Test- Illinois
Dryland Soybeans @ R3
Spray Plane with
Fungicides
Control- 77.4 Bu/Ac
Ingrained - 82.6 Bu/Ac

Corn Field Test

(Yields adjusted to 15.5% moisture)



Corn Field Test- Illinois
Dryland Corn @ V5
Self propelled Sprayer
with Chemical Mix
Control- 231.4 Bu/Ac
Ingrained- 243.1 Bu/Ac

